



Strategic Action Plan

for Project Beaver

October 2023



Introduction

In order to be effective, we must be disciplined in how we allocate energy and money. As an organization, we focus only on the work that we understand we can be the best in, leaving everything else to others. This document is a roadmap, our “to-do list” for improving the world.

This plan is intended to help ensure that the right decisions happen for the long-term efficacy of Project Beaver, as we lead with humility, communicate from the why, and focus on accountability through outputs. This plan should be considered and revised at least once a year.

Guiding Statements

Mission

| *We empower humans to partner with beavers and value their works.*

Purpose

| *We exist to help humans defer to the stewardship of beavers in managing our waterways.*

Vision

| *We work to nourish a world where humans partner with beavers for the resilience of our planet.*

Values

Humility We are but students of complex systems and old wisdom, committed to doing our best.

Excellence We are dedicated to craft and skill in all that we do.

Action We are here together, now, acting out of love for the earth and future generations.

Respect We treat all people with dignity and respect, even and especially when we may disagree.

Truth We are committed to sincerity and honesty as we stand together for a common purpose.

Programs

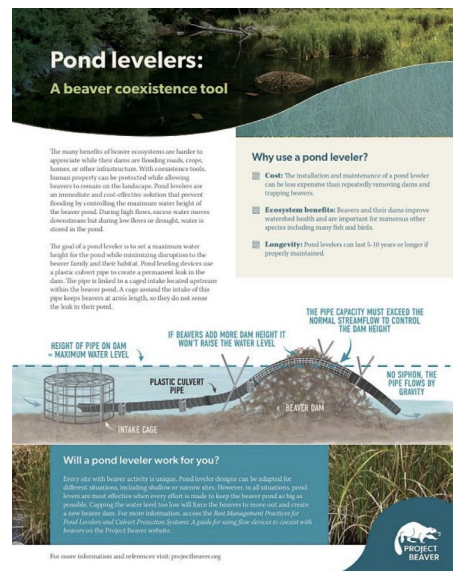
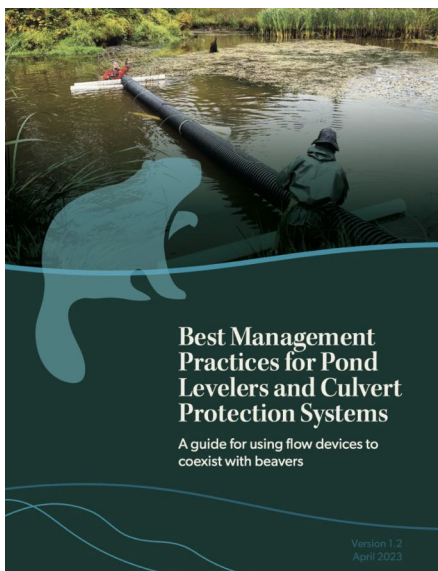
Empowering humans

This program is our approach to empowering humans with better tools for partnering with beavers. Because beavers are an opportunity to come together for land, water and people.

1. Knowledge resources

Maintain an online resource hub via a user-friendly website, optimized to empower visitors to partner with beavers through easy access to both our organization's resources and those of others.

- Develop and promote one-page infosheets that empower people to share key concepts about beaver coexistence and beaver-based restoration with others.
- Maintain the *Best Management Practices (BMPs) for Pond Levelers and Culvert Protection Systems* document.
- Produce and maintain a set of BMPs for protecting trees and crops from beavers.
- Encourage and track innovative design in beaver coexistence techniques.
- Fine-tune existing designs for flow devices, tree and crop protection to improve functionality.



2. Lead by example in SW Oregon

Lead a strategic approach to planning and implementing landscape scale beaver-based restoration and coexistence in Southwestern Oregon. Conduct high-profile projects across a diversity of ecologies, land-use practices and human partners. Publish case-study as model.

- a. Consider the landscape; conduct beaver habitat modeling for the Rogue Basin and Cascade Siskiyou National



Monument, and develop an **interactive online map** tailored to both the public and regional restoration practitioner community.

- b. Consider the landscape; produce **“beaver plans for public lands”** for aimed at increasing beavers on the landscape, with the ability to positively impact the hydrology, biology, and biodiversity of the ecosystem.
- c. Consider the beavers; facilitate a **community science monitoring “scavenger hunt”** project with regional partners for beaver presence and activity that will directly inform beaver-based restoration planning.
- d. Consider the beavers; **collect genetics data on the beaver population** through opportunistic hair sampling, in collaboration with local academia.
- e. Consider the people; give invited **“beaver talks”** to community groups, organizations, schools and clubs.
- f. Consider the people; **work with regional nuisance wildlife removal companies** to understand their needs to support beaver coexistence and non-lethal solutions.
- g. Help beavers stay; strengthen and maintain a **“help desk” and “first responder”** program to connect landowners with beavers questions and coexistence struggles with trained people that can help.
- h. Help beavers stay; administer (or support the creation of) a **cost-share fund** to support implementing beaver coexistence solutions.
- i. Help beavers fix it; conduct and support **process-based restoration projects** with the goal of restoring beavers to degraded streams.
- j. Help beavers find it; strengthen and maintain a **refugee program** to relocate beavers that would otherwise be killed.
- k. Monitoring; produce an annual **“State of the Beavers”** report to publicly consider the unique and enduring impact of our regional efforts.





3. Castor consciousness

Empower productive cross-pollination across the larger ecosystem of culture and consciousness throughout the northern hemisphere.

- a. Provide technical support to tribes, First Nations, and others who are still on the land.
- b. Appear on podcasts with anyone who comes to the conversation in good faith to learn more about beavers.
- c. Collaborate with those working to address the bureaucratic confusion and green tape through technical and strategic support.
- d. Serve on national and international committees and working groups that work toward valuable outputs and gatherings (i.e. the Beaver Institute's Beaver Management Working Group, the International Beaver Knowledge Center working group, and the State of the Beaver Conference).
- e. Empower restoration practitioners to embrace beavers, through projects that strategically address the hurdles these people face to partnering with beavers in their restoration (i.e. beavers and coho salmon on the Oregon coast).

Valuing beaver works

This program is focused on helping humans value the work of beavers. As the late Takelma grandmother Agnus Baker Pilgram insisted, we must “be the voice for the voiceless” and many humans have forgotten the ecological wealth that beavers bring to a landscape.

3. Beavers 101 advocacy materials

- a. Develop a comprehensive suite of one-page infosheets that empower people to share key concepts with others about the positive ecological impacts of beavers.
- b. Develop “beaver backpacks” to empower beaver advocacy by other organizations.

4. Field station

- a. Acquire land in an accessible area with mature beaver-modified floodplains.
- b. Create a place for members of the public to visit and experience beaver work and coexistence solutions in action.
- c. Utilize this land for our programs’ research and development needs.





5. Ecological wealth

- a. Create a program for landowners to capitalize upon the value of beaver-managed habitat.
- b. Fund and sign-up participants in a pilot program.
- c. Create a standards body and verification program for beaver managed wetlands.
- d. Develop a technological monitoring program that is responsive to real-time environmental conditions and changes.
- e. Facilitate the connection to existing “ecosystem services” market.

